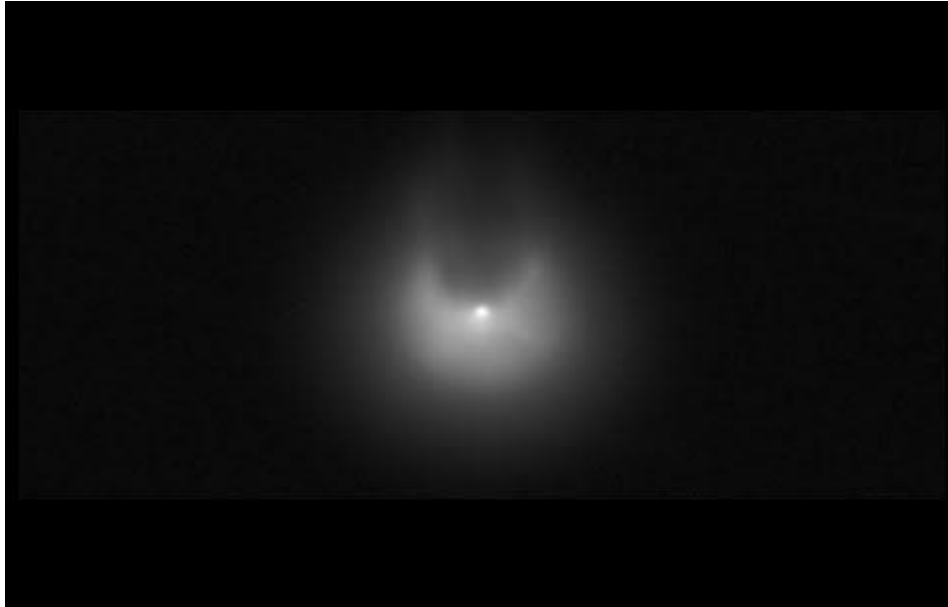


April 8 SOLAR ECLIPSE and PLANETARY ALIGNMENTS

PART 2

Before turning to the eclipse, let us look at the Comet Pons-Brooks mentioned in the Part 1 article. It is expected to reach its maximum brightness during April making its closest approach, its perihelion, just around the total eclipse and very near to Jupiter and Uranus. Depending on its activity it may be visible during the eclipse, since it cannot be seen now in the night sky. So, we have the highly unusual event of a total solar eclipse with a comet passing close by. It is called the “Horned Comet” or “Devil Comet” due to the distinctive horn shape formed in its tail (see image below). It has also been called the “Mother of Dragons” because it is the parent comet that brings us the Draconids meteor shower, from the region of the constellation Draco, the Dragon, during the first week of October, right after Micha-el’s day (Sept. 29th). This comet is a periodic comet, like Halley’s comet. It has a return about every 70-71 years. It was first discovered in 1812 and again in 1883. Its last return was in 1953 and now again in 2024. Its next return will be in 2095. Comets come from the regions surrounding our solar system, the Kuiper Belt and the great surrounding cosmic sphere of the Oort Cloud.



On April 8th, we encounter a unique situation between Earth, Moon, and Fixed Star (our Sun), while a comet is also then coming nearest to our Sun. With the comet we have an entity at the far extreme from the Moon, which is the active entity at work in an eclipse blocking the life/light from our Star. The Moon is an over-incarnated mineralized dead body, which has a very regular rhythm around the Earth. Rudolf Steiner describes all Moon bodies as “corpses” of their planetary bodies, cast off from the planet. The comet, on the other hand, appears like a lightning bolt streaking unexpectedly and unpredictably (except for a few periodic comets) through the cosmos as a purely spiritual force, collecting along its journey the dense and harmful astrality as its “body” until it disappears again out of our spatial solar system into a spiritual dimension from where it came.

The image below gives a picture of the radically different quality of the comet in relation to our solar system. Though in this image, the comet orbit is shown as an ellipse, Rudolf Steiner describes this as a materialistic illusion based on calculations. According to Steiner, from its disappearance to its reappearance, it is not present in our world of space as we know it. *Occult vision shows us, that, however, as a matter of fact, just about when the comet disappears from physical sight, it dissolves, and*

continues its way through a world not limited to the ordinary three dimensions of space; it no longer exists in the ordinary world. It actually disappears on the one side and appears again on the other. (see reference source below). This is akin to a human individuality, who departs earthly life as one person but reincarnates as another individual. As Dr. Elisabeth Vreede says in her letters to the Anthroposophical Society members: the identity of two comets can no more be established than the identity between Raphael and Novalis [his reincarnation] can be established by purely external means. The underlying unity is a spiritual impulse in the supersensible world. (Dr. Elisabeth Vreede, was a colleague of Rudolf Steiner and was appointed by him as the head of the Mathematical-Astronomical Section of the Society in Dornach. She was the mentor and colleague of Willi Sucher until her death in 1943. This quote is from Letter 10, June, 1929).

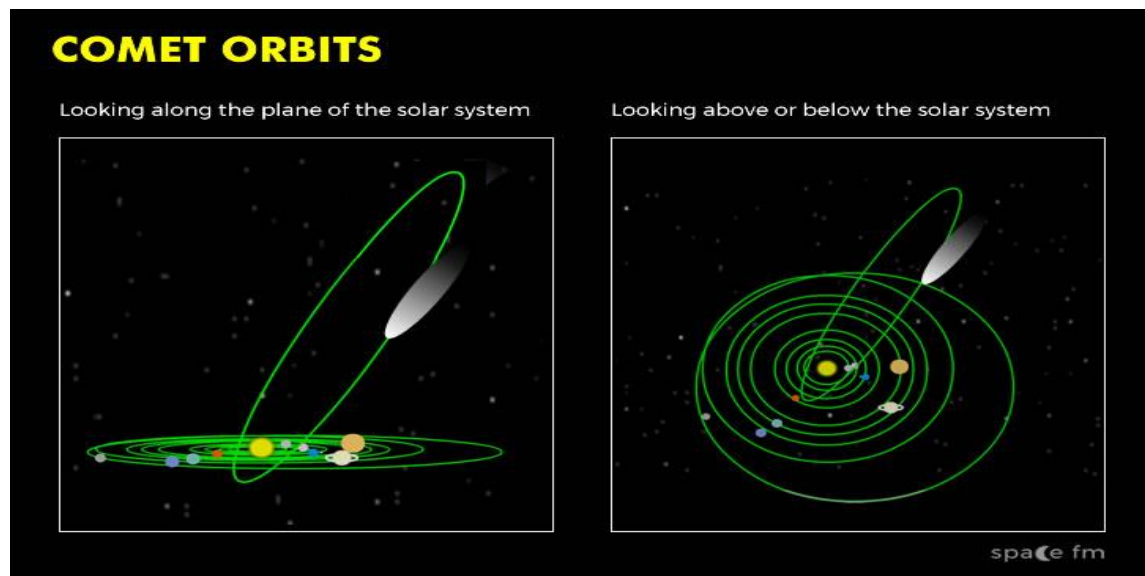


Image from www.space.fm

What purpose does the comet serve? (From *The Spiritual Beings and the Heavenly Bodies*, Helsingfors, Finland, lecture 7, GA 136)

Yet even if you consider human life upon the earth, you will admit that by means of this human life there arise a number of astral beings, of astral forms, which are actually harmful, hindering to life. From man himself stream forth continually, erroneous, base, evil thoughts; these are, as we know, realities, which pass out into the astral world and continue to exist there; so that the astral sphere of a planet is filled, not only by the normal substances of its psychic being, but also by this out-poured astral substance. If we should only investigate all the harmful forces brought forth by the various Luciferic Spirits, we should find an enormous mass of harmful, astral substances in a planetary system. And in a curious way, the occult vision, which for a time has had the opportunity of observing cometary life, shows us that everything of a cometary or meteoric nature is ever striving to collect round itself all the harmful astral products, and to remove them out of the planetary system...the noxious Luciferic evils are carried away through the comets out of the planetary system...

Thus we must regard cometary life as something which continually works as a thunder storm in the planetary system, cleansing it. By the passage of a comet through the planetary system an effort is made to discharge from it the injurious matters which have been called forth in the system by the harmful astral radiations of the beings.

And further, particularly in reference to Halley's comet, another periodic comet like the current Pons-Brooks comet, from *The Reappearance of Christ in the Etheric*, GA 118,4. Mysteries of the Universe: Comets and the Moon, Stuttgart, 5 March, 1910:

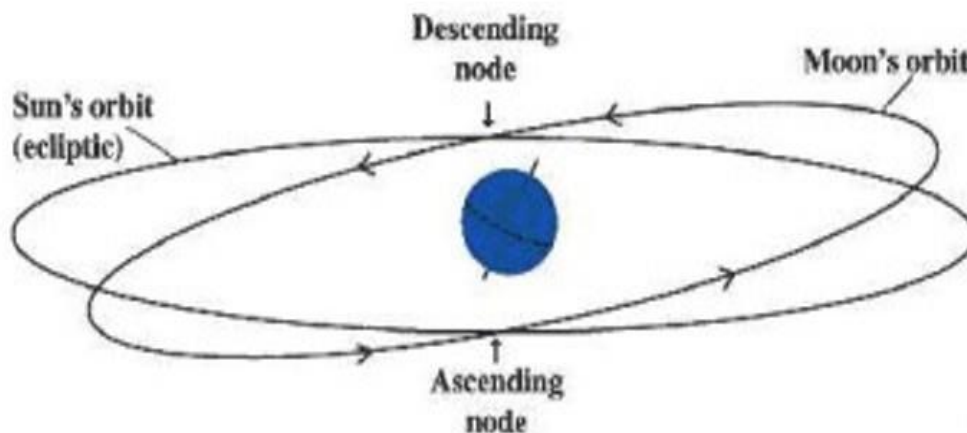
The cometary nature is something elemental; it stirs things up and in a certain sense is necessary in order that the advancing course of evolution may be supported in the right way from the cosmos...

*This is how the working of the comet now expresses itself: when the human I takes a step forward, then, in order that the whole man can advance, the physical and etheric or life bodies must be correspondingly transformed. If the I is to think differently in the nineteenth century from the way it thought in the eighteenth, there must also be something that changes the outer expression of the I in the physical and etheric bodies — and this something is the comet! **The comets work upon the physical and etheric or life bodies of man in such a way that they actually create organs, delicate organs that are suitable for the further development of the I — the I-consciousness as it has developed especially since the imbedding of the Christ impulse in the earth. Since that time the significance of the comet's appearance is that the I, as it develops from stage to stage, receives physical and etheric organs it can use.***

In this quote, we can see perhaps some of the points raised in Part 1 about the challenges and questions of the planetary configurations in relation to the awakening of the “new sight” or the new thinking called for and the karmic challenges faced with the old retarding forces within evolution. Here we can remember the Saturn karmic task now meeting Mars, the warlike planet, or Jupiter, holding the future progress of evolution, meeting Uranus with its potential for revolutionary impulses and even enlightenment. Out of the cometary “thunderstorm” of purification of astral forces and the release of harmful and destructive astrality during the solar eclipse, perhaps some new element is able to enter into our consciousness. This comet is sent by the highest spiritual hierarchies beyond the planetary spheres to “stir things up” in order “to rightly maintain the progress of evolution” and “the further development of the I.”

Now we can turn to the solar eclipse of April 8th. For a video of the path of the eclipse over North America: <https://c.tadst.com/gfx/eclipses2/20240408/anim2d-380.mp4>
The darkest red center in the video is the path of complete totality.

At every new Moon, of course, the Moon comes between the Earth and the Sun, but at an eclipse this alignment takes place in one of the two Lunar Nodes, which are the two points on the ecliptic plane where the path of the Moon intersects the path of the Sun.

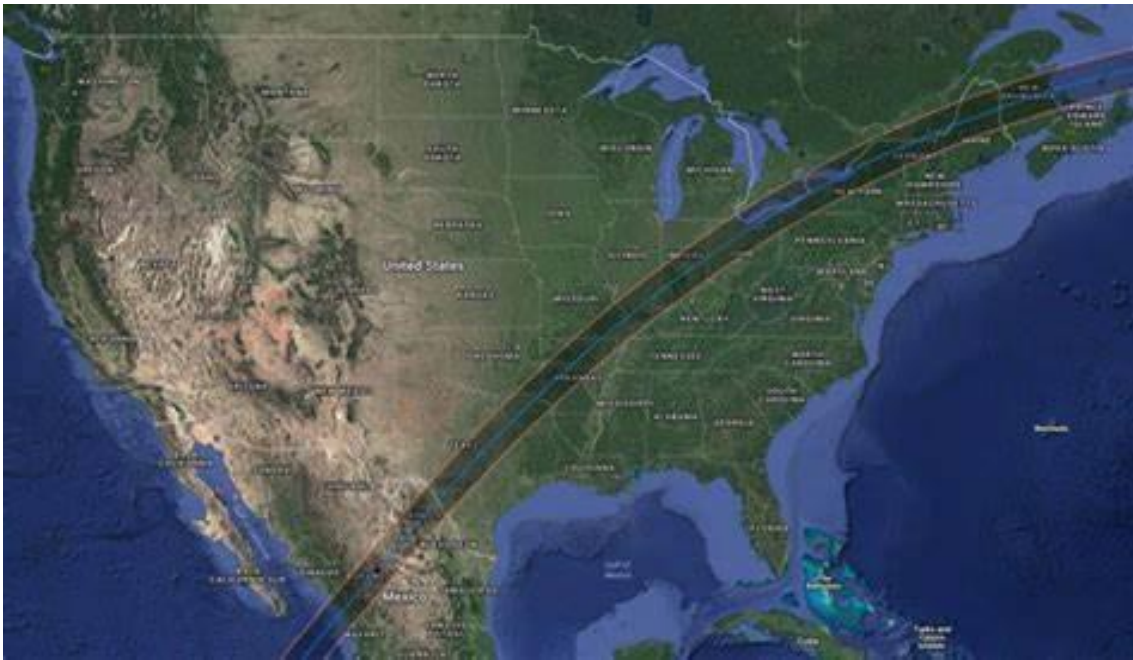


The lunar nodes are spiritual doorways, or portals, from the Moon sphere into the Sun sphere. So, if the Moon comes into the Lunar Node at the same time that it comes between the Earth and the Sun, the Moon stands in that door and the Sun is blocked from the Earth in an eclipse, which can be partial or total depending on the exact time and angle of this alignment. This moment lasts only a few minutes in each location on the globe as the Moon and Earth keep moving so that the shadow moves across the face of the Earth in its rotation.

On April 8th the Sun will be darkened by a total solar eclipse. As the image below shows, the path of this total eclipse will cross south to north from Mexico through the heartland of the United States and up

through the northeast. Every eclipse can be understood as a being that has a biography. It has a birth, a maturation, a decline, a death. The life cycle of eclipse beings is defined by Saros cycles. Each Saros cycle is about 18 years and is related to the full cycle of the Moon Nodes. So, one Saros can be compared to one year in a human life looking at its biographical life. Each Eclipse being lives for 70+ Saros cycles covering about 12 to 13 centuries in total. The Eclipse being which will manifest as this Great American Eclipse is known in astronomy as Saros 139. This eclipse was “born” on May 17th, 1501 and will complete its life cycle after 1262 years on July 3rd, 2763. This eclipse is the 30th of 71 eclipses in this Saros biography, equivalent then to the 30th year in its life cycle.

Below is an image of the path of this Solar eclipse shadow:



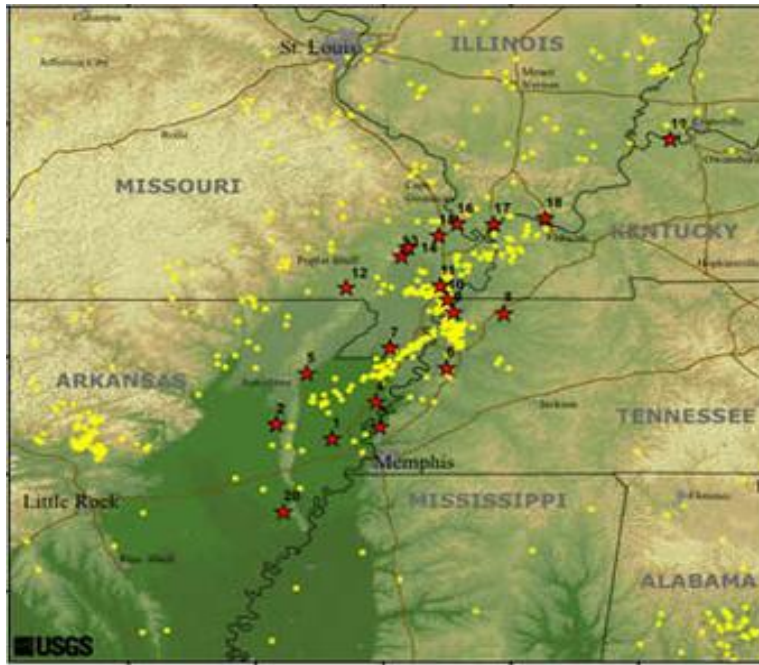
Rudolf Steiner speaks about these solar eclipses, when the Moon blocks the Sun casting a cone of shadow upon the Earth. This shadow creates a kind of funnel pathway which allows for the dark and destructive forces from the Earth to be released into the cosmos, without the force of the Sun to check them. The eclipse thus serves as a kind of “release valve” for the destructive astral forces built up by human beings and other destructive entities to then leave the Earth. He compares it to something like a steam valve which releases built up pressure. As humans on the Earth, if we are sensitive to it, can then perhaps experience a surging up of destructive evil forces out of the Earth to be taken up into the cosmos. There is a reason that earlier peoples greatly feared these solar eclipses when the life-giving Sun was darkened and the surging forces of evil were let loose into the heavens. This darkening then, according to Rudolf Steiner, allows for the release of Luciferic forces into the cosmic spaces where they then can produce other disasters. In this eclipse we also have the comet nearby as a kind of purging astral thunderstorm sweeping up these destructive astral forces to clear the astral world and take them out of the solar system. So we can consider this twofold activity as perhaps a kind of release and clearing out of these forces into the cosmos. It is a mystery how all this activity of eclipse, comet and planetary configurations at this time will become manifest and unfold on Earth.

To add another element to this question, as I think about the release of the negative astrality, this eclipse is seven years after another total American eclipse in August, 2017, which crossed the USA from north to south through the heartland and down through the southeast. Below is an image of the crossing of these two eclipse paths.

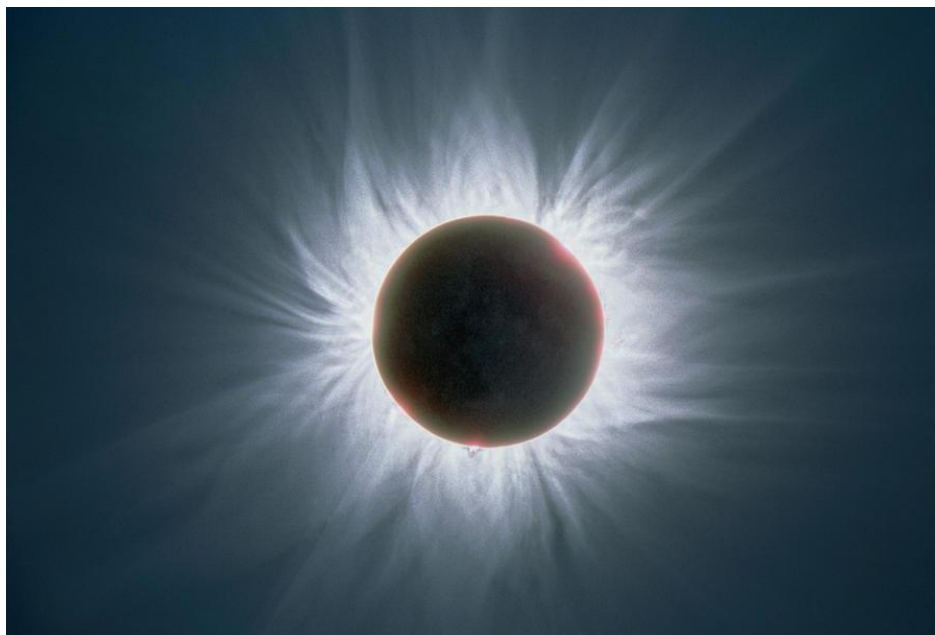


One important element around the approaching eclipse I discovered listening to a recent presentation on the spiritual geography of the United States, given by Robert Karp, and later I followed up with him. If we consider the potential kinds of “release” of destructive evil forces from the Earth at a solar eclipse, we must of course consider the subterranean forces captured beneath the Earth surface, in the counter-ethers. In his presentation Robert spoke about a fissure region in the heartland of the United States which has potential for earthquakes. Even this picture in itself of the tectonic plate “fissure” in the heartland of the USA will have meaning for those of us currently experiencing the situation in the USA. The last large earthquake there was in 1811/1812, which temporarily caused the Mississippi River to flow backwards. This region in the heart of the USA is called the New Madrid seismic zone. In speaking to Robert, I looked at the map of the intersection of the two great total eclipse paths across the USA and discovered that the center of this great cross of the eclipse paths was in this seismic fault zone where Illinois, Kentucky and Missouri meet, with the exact point near a small town in South Illinois. This is something certainly worth consideration as this event unfolds.





So how do we meet this eclipse consciously? One answer is found in the appearance of the Sun during the eclipse. (see image below) The center of the Sun is darkened by the Moon's shadow, but this offers a beautiful view of the corona radiating around the Sun, which is really only visible during eclipse time. With the Sun portal darkened, the living light of the Sun is not streaming to the Earth to absorb and intercept the streaming astrality from the Earth. Therefore it is released into the cosmos as Steiner indicates, to create trouble there. We can clearly see this beautiful corona and should focus our thoughts on the power of the Christ force which radiates throughout the cosmos from this crown of the Sun and this force which now shines from within the Earth through the union of human beings with this spiritual power. The eclipse is not a time for inner meditation but of being fully awake to the Christ force within us to bring that light into this shadow time. We must also consider the suggestions around the star events described in Part 1, because these events of eclipse and comet location are all participating within the greater wisdom and context of these mutual relationships of the cosmic intelligences of the planetary beings and stars.



To close, I would like to share a favorite quote from Rudolf Steiner about our relationship to the cosmos.

When we thus look out into the spaces of heaven, we can, through such reflections, also gain a moral impression which must, if we allow the mighty operations of the hierarchies in cosmic space to gain a little influence over us, result in our being drawn away from the passions, desires, impulses, and concepts which our physical earth-life brings to maturity. These are, in essence, that which flings down into the development of the earth that which divides humanity into factions, which makes men all over the world opponents or partisans, in the most varied directions. In a higher moral sense, we attain a sense of freedom, if but for a brief time, we free ourselves from the consideration of earthly things, and contemplate the worlds of spirit in cosmic space. Then do we become free from that which otherwise plays in our egotistical impulses, which are the original cause of all the smallness and quarreling upon earth. Hence the most certain means of attaining the high ideals of our Anthroposophical life is to direct our gaze from time to time to the starry worlds and their spiritual guides and leaders, the hierarchies... Only we must learn to read the mighty writing given us in the forms and movements of the heavenly bodies — learn to read how, in reality, not different but the same spirits, work for each single individual on earth — that they belong to all men.

(The Spiritual Beings and the Heavenly Bodies, Helsingfors, Finland, lecture 10, GA 136)

Jonathan Hilton
4.3.2024
Astrosophy.com